



HYDROSCAND MACHINES

PRODUCT GROUP 900

In Hydroscauds machine program you will find machines for hydraulic hose assembly, from swaging machines to collapse mandrels.

The program also includes equipment for assembling, flattening and pipe bending.

Our strive is to always develop and improve our machine assortment. Therefore, we have continued to develop our automatic machines even further.

Visit your local Hydroscaud branch for further information

TABLE OF CONTENTS



MACHINES

PAGE

Cutting machines	335-340
Skive and Push-On machines	341-346
Swaging machines	347-351
Marking systems	352-356
Cleaning systems	357-361
Other machines	362-363
Pipe bending machines	364-367



9085 KNIFECUT 4-30BT



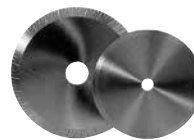
KnifeCut 4-30BT is a pneumatically operated cutting tool for cables and for hoses with polyamide and textile reinforcement. It is suitable for hoses from 4 mm to 30 mm OD. KnifeCut 4-30BT is controlled by a foot pedal, and is delivered with two tools, one for standard hoses and one for twin hoses. Because of the guillotine knife, the cut is in perfect angle and leaves the hose free from rubber waste.

Length: 250 mm
 Width: 320 mm
 Height: 440 mm
 Weight: 14 kg

ACCESSORIES

Part number	Type
9085-01-01	KnifeCut 4-30BT

Part number	Type
9079-99-01	Cutting blade 50x55x2,5



9006 MINICUT 5-50



A manually operated cutting machine designed for smaller workshops and service vans. MiniCut has a robust construction, is highly reliable and easy to use. There are three different motor alternatives to choose from: 12V, 230V single phase and 230/400/460V 3-phase. The machine is prepared with a smoke evacuation connection and it's suitable for braided hoses up to 2".

Length: 450 mm
 Width: 400 mm
 Height: 430 mm
 Weight: 45 kg

ACCESSORIES

Part number	Type
9006-01-00	MiniCut 5-50 3-phase / 3kW 400V/16A/50Hz
9006-01-00N	MiniCut 5-50 3-phase / 3kW 230V/16A/50Hz
9006-02-00	MiniCut 5-50 1-phase / 2,2kW 230V/16A/50Hz
9006-03-00	MiniCut 5-50 1kW 12/24V

Part number	Type
9003-00-03	Cutting blade "Standard" 300x3x50
9003-01-02	Cutting blade "Toothed TS" 300x3x50



9031-00-03 MIDICUT 5-50P



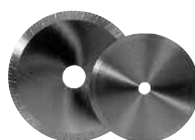
MidiCut 5-50P is a pneumatically operated hose cutting machine for the medium sized workshop or the small serial production. The machine is very safe and easy to use.

Length: 705 mm
 Width: 570 mm
 Height: 385 mm
 Weight: 80 kg

ACCESSORIES

Part number	Type
9031-00-03	MidiCut 5-50P, 400V 3-phase 5kW

Part number	Type
9003-00-03	Cutting blade "Standard" 300x3x50
9003-01-02	Cutting blade "Toothed TS" 300x3x50



9009 MAXICUT 5-60 OT



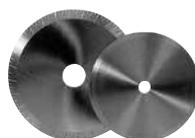
MaxiCut 5-60 is a high performance and very safe pneumatically operated hose cutting machine for the large workshop. The cutter has a 5 kW motor and a 400 mm cutting blade. The machine is suitable for hoses with up to four steel braids with dimensions from 3/16" up to 2". This model has an "open throat" hatch for inserting the hose from the front. The machine is also equipped with a pre-selection for three different cutting speeds to avoid overheating of the cutting blade and variable cutting stroke.

Length: 700 mm
 Width: 600 mm
 Height: 1300 mm
 Weight: 140 kg

ACCESSORIES

Part number	Type
9009-00-00	MaxiCut 5-60, 400V 3-phase 5kW
9009-00-01	MaxiCut 5-60, 230V 3-phase 5kW

Part number	Type
9009-01-01	Cutting blade "Standard" 400x4x50
9009-01-02	Cutting blade "Toothed TS" 400x4x50



9010 POWERCUT 5-75 PH



A pneumatic hose cutting machine for the large workshop. The cutter has a 7,5 kW engine and a 520 mm blade. The machine is suitable for hoses with up to six steel braids with dimensions from 3/16" up to 2" and for industrial hoses up to dimension 3". Max outside hose diameter, 90 mm.

The machine has an "open throat" hatch for inserting the hose from the front. Comes with three different cutting speeds and variable feeding speed. Adapter for smoke evacuation Ø100. Counter for 0-9999 pcs. The machine comes with pneumatic bend when cutting a hose.

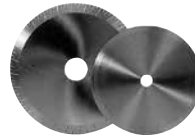
NB! For hoses with four and six steel braids, use toothed cutting blade.

Length: 900 mm
 Width: 645 mm
 Height: 1150 mm
 Weight: 210 kg

ACCESSORIES

Part number	Type
9010-00-00	PowerCut 5-75 400V/25A/50Hz 7,5 kW
9010-00-15	PowerCut 5-75 230V/25A/50Hz 7,5 kW

Part number	Type
9005-00-01	Cutting blade "standard" 520x4x38
9005-00-03	Cutting blade "toothed TF" 520x4x38
9005-00-04	Cutting blade "toothed TS" 520x4x50
9005-01-04	Adapter ring 50x38 for cutting blade 9005-00-04



9080 AUTOCUT 5-20L



AutoCut 5-20L is an automatic cutting machine for textile and steel reinforced hoses up to 3/4". It is very easy to use thanks to the touch screen and has excellent length tolerance. Hose Reel and conveyor are optional, available in different design to meet your request. There is also an inductive heating unit available as option used to prevent flaring hose ends when cutting stainless steel reinforced teflon hose.

- Advantages:
- Fast and easy operation.
 - Safety system to protect the user
 - Adjustable feeding speed
 - Adjustable cutting speed
 - Excellent cut tolerance
 - Fast and easy tool change.
 - Cutting blade completely encased.

Technical data

AutoCut 5-20L

Hose diameter	8-30 mm OD
Cutting capacity	500 pcs/hour
Max load hose reel	400 kg
Max cutting length	32000 mm
Cutting tolerance	± 1 mm
Cutting tolerance	Acc. to DIN 20066
Motor	5,5 kW 2880 rpm
Voltage 3-phase	230/400V/20A/50
Feeding motor	0,5 kW
Feeding speed	10-30 m/min
Cutting blade diameter	400 mm
Shaft diameter cutting blade	50 mm
Air pressure	min. 6,0 bar
Hose connection for smoke evacuation system	100 mm
Colour	Light grey
Storage capacity	1200 part no.
Length	1070 mm
Width	750 mm
Height	1100 mm
Weight	475 kg

HoseReel-EOS

Length	3100 mm
Width	750 mm
Height	1100 mm
Weight	155 kg

Conveyor

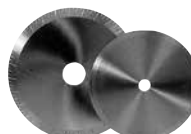
Length	2000/3000 mm
Width	300 mm
Height	1400 mm
Weight	75/100 kg



ACCESSORIES

Part number	Type
9080-03-00	AutoCut 5-32 400V / 5,5kW 3-phase
9080-01-11	HoseReel-EOS
9080-01-21	Conveyor 2 m
9090-00-00	CellCon 2000 digital measuring
9080-01-22	Conveyor 3 m
9090-00-02	CellCon 2900 digital measuring

Part number	Type
9005-00-04	Cutting blade "toothed" 520x4x50
9080-01-31	Printer for work reports
9080-01-35	Remote control, foot pedal
9080-00-03	Remote control, handle
9080-00-06	KnifeCut 4-30AC, pneumatic ending tool
9080-00-13	Hose joint detection system



9080 AUTOCUT 5-32C



AutoCut 5-32C is a computer-controlled and automatic cutting machine. The cutter has a 5,5 kW engine and a 520 mm blade. Suitable for hoses with one and two steel braids from dimension 3/16" to 1 1/4" and hoses with four steel braids up to dimension 1". It is easy to operate because of the logic control unit and LCD-display. The machine is designed for easy change of tools. The workflow is optimized by adding the hose reel and the conveyor unit.

Advantages

- Fast and easy operation
- Safety system to protect the operator
- Computer controlled process (PLC)
- Colour touch-screen control
- Storage capacity of 1200 part numbers
- Cutting tolerance much better than according to DIN 20066
- Fast and easy tool change
- Three feed speeds, 18/28/40 metre/minute
- Three cutting speeds
- Two cutting heights
- Cutting blade completely encased

Technical data

AutoCut 5-32C

Hose diameter	8-50 mm OD
Cutting capacity	480-700 st/tim
Max load hose reel	400 kg
Max cutting length	99999 mm
Cutting tolerance	± 1 mm
Cutting tolerance	Acc. to DIN 20066
Motor	5,5 kW 3000 rpm
Voltage 3-phase	230/400V/25A/50Hz
Feeding motor	0,35 kW
Feeding speed	18/28/40 m/min
Cutting blade diameter	520 mm
Shaft diameter cutting blade	38 mm
Air pressure	min. 7,0 bar
Hose connection for smoke evacuation system	100 mm
Colour	Light grey/dark grey
Storage capacity	1200 part no.
Length	1070 mm
Width	750 mm
Height	1100 mm
Weight	475 kg

HoseReel-EOS

Length	3100 mm
Width	750 mm
Height	1100 mm
Weight	155 kg

Conveyor

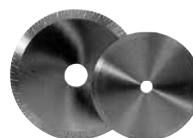
Length	2000/3000 mm
Width	300 mm
Height	1400 mm
Weight	75/100 kg



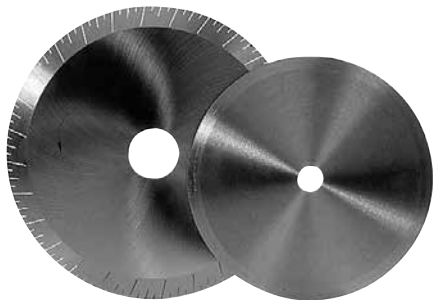
ACCESSORIES

Part number	Type
9080-01-00	AutoCut 5-32 400V / 5,5kW 3-fas
9080-01-11	HoseReel-EOS
9080-01-21	Conveyor 2 m
9090-00-00	CellCon 2000 digital measuring
9080-01-22	Conveyor 3 m
9090-00-02	CellCon 2900 digital measuring

Part number	Type
9005-00-04	Cutting blade "toothed" 520x4x50
9080-01-31	Printer for work reports
9080-01-35	Remote control, foot pedal
9080-00-03	Remote control, handle
9080-00-06	KnifeCut 4-30AC, pneumatic ending tool
9080-00-13	Hose joint detection system



900x CUTTING BLADES



Hydroscand can offer three different types of cutting blades: one standard blade and two toothed blade types, all manufactured in hardened steel. The blades perform quick and clean cutting results on 1-, 2-, 3-, 4- and 6-braided steel hoses. Available in dimensions 200 mm – 520 mm.

Part number	Type
9002-00-02	Cutting blade std. 200x3/40 mm
9001-00-01	Cutting blade std. 250x3/16 mm
9001-00-02	Cutting blade std. 250x3/25 mm
9006-06-01	Cutting blade std. 250x3/25,4 mm
9006-00-01	Cutting blade std. 250x3/32 mm
9003-00-01	Cutting blade std. 300x3/16 mm
9009-01-01	Cutting blade std. 400x4/50 mm
9005-00-01	Cutting blade std. 520x4/38 mm
9006-01-02	Cutting blade toothed 250x3/40 mm
9003-01-02	Cutting blade toothed 300x3/50 mm
9009-01-02	Cutting blade toothed 400x4/50 mm
9005-00-03	Cutting blade toothed 520x4/38 mm
9005-00-04	Cutting blade toothed 520x4/50 mm

ACCESSORIES

Part number	Type
9006-01-05	Adapter ring for toothed cutting blade 40x25,4 mm
9006-01-06	Adapter ring for toothed cutting blade 40x32 mm
9005-01-07	Adapter ring for toothed cutting blade 50x32 mm
9005-01-04	Adapter ring for toothed cutting blade 50x38 mm
9005-01-05	Adapter ring for toothed cutting blade 50x40 mm

9010 SCRAPCUT 5-50



ScrapCut is used to cut off the fitting so that the old hose can be recycled. The machine uses a guillotine because this type of cutting does not require high tolerance. This will eliminate the smoke and dust in the workshop.

Length: 1300 mm
 Width: 800 mm
 Height: 1900 mm
 Weight: 240 kg

Part number	Type
9010-10-00	ScrapCut 5-50 400V 50Hz 3-phase
9010-10-01	ScrapCut 5-50 230V 50Hz 3-phase

ACCESSORIES

Part number	Type
9018-15-40	Knife, top part
9018-15-41	Knife, bottom part

9104 HOSE CUTTER FOR THERMOPLASTIC HOSES

Part number	Type
9104-01-00	Hose cutter for termoplastic hoses and pneumatic pipes
9104-01-01	Knife for hose cutter



9020-00 SKALMAN



Length: 500 mm
Weight: 4 kg

Part number	Type
9020-00-05	SkalMan, manual skiving machine (excl. tools)

ACCESSORIES

Part number	Type
-------------	------

Skiving tool external short arm - EST

9022-00-00	Holder to skiving tool + 1 short arm.
9022-00-01	Short arm
9022-00-03	Cutting knife
9022-02-03	Mandrel 3/16"
9022-00-04	Mandrel 1/4"
9022-00-05	Mandrel 5/16"
9022-00-06	Mandrel 3/8"
9022-00-08	Mandrel 1/2"
9022-00-10	Mandrel 5/8"
9022-00-12	Mandrel 3/4"
9022-00-16	Mandrel 1"

9020 MIDISKIVE 5-50B



Length: 410 mm Height: 390 mm
Width: 600 mm Weight: 35 kg

Part number	Type
9020-04-01	MidiSkive 5-50B 400 V/0,37kW 3-phase
9020-04-02	MidiSkive 5-50B 230 V/0,37kW 1-fas
9020-04-04	MidiSkive 5-50B 230 V/0,37kW 3-fas

ACCESSORIES

Part number	Type
-------------	------

Skiving tool external short arm - EST

9022-00-00	Holder to skiving tool + 1 short arm.
9022-00-01	Short arm
9022-00-03	Cutting knife
9022-02-03	Mandrel 3/16"
9022-00-04	Mandrel 1/4"
9022-00-05	Mandrel 5/16"
9022-00-06	Mandrel 3/8"
9022-00-08	Mandrel 1/2"
9022-00-10	Mandrel 5/8"
9022-00-12	Mandrel 3/4"
9022-00-16	Mandrel 1"

A manual skiving machine for use in a vice. Skalman is suitable for the small workshop and is very easy to handle. It is used together with our skiving tools 9022 - EST.

Skiving tool external long arm - EST

9022-01-00	Holder to skiving tool + 1 long arm.
9022-00-02	Long arm
9022-00-03	Cutting knife
9022-01-20	Mandrel 1 1/4" long
9022-01-24	Mandrel 1 1/2" long
9022-01-32	Mandrel 2" long

Skiving tool internal - IST

9025-01-05	Cutting knife internal 5 mm-3/8"
9025-01-06	Cutting knife internal 6 mm-1/2"
9025-01-08	Cutting knife internal 8 mm-5/8" - 3/4"
9025-01-10	Cutting knife internal 10 mm-1" - 1 1/4"
9025-02-10	Cutting knife internal long 10 mm-1 1/2" - 2"
9025-15-06	Skiving tool internal 3/8"
9025-15-08	Skiving tool internal 1/2"
9025-15-10	Skiving tool internal 5/8"
9025-15-12	Skiving tool internal 3/4"
9025-15-16	Skiving tool internal 1"
9025-15-20	Skiving tool internal 1 1/4"
9025-15-24	Skiving tool internal 1 1/2"
9025-15-32	Skiving tool internal 2"

Skiving tool external/internal - OST See part no. 9025-16

A bench-mounted skiving machine for the medium sized workshop for inner and outer skiving. MidiSkive is easily controlled by either a button or a foot pedal.

Skiving tool external long arm - EST

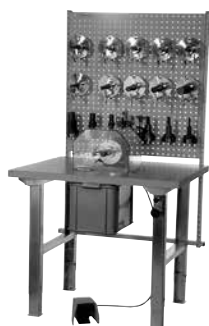
9022-01-00	Holder to skiving tool + 1 long arm.
9022-00-02	Long arm
9022-00-03	Cutting knife
9022-01-20	Mandrel 1 1/4" long
9022-01-24	Mandrel 1 1/2" long
9022-01-32	Mandrel 2" long

Skiving tool internal - IST

9025-01-05	Cutting knife internal, 5 mm-3/8"
9025-01-06	Cutting knife internal, 6 mm-1/2"
9025-01-08	Cutting knife internal 8 mm-5/8" - 3/4"
9025-01-10	Cutting knife internal 10 mm-1" - 1 1/4"
9025-02-10	Cutting knife internal long 10 mm-1 1/2" - 2"
9025-15-06	Skiving tool internal 3/8"
9025-15-08	Skiving tool internal 1/2"
9025-15-10	Skiving tool internal 5/8"
9025-15-12	Skiving tool internal 3/4"
9025-15-16	Skiving tool internal 1"
9025-15-20	Skiving tool internal 1 1/4"
9025-15-24	Skiving tool internal 1 1/2"
9025-15-32	Skiving tool internal 2"

Skiving tool external/internal - OST See part no. 9025-16

9020 MIDISKIVE 5-50C



Length: 900 mm
 Width: 850 mm
 Height table: 800-950 mm
 Height total: Max 2150 mm
 Weight: 75 kg

A bench skiving machine for the medium sized workshop for inner and outer skiving. MidiSkive is easily controlled by either a button or a foot pedal. It can also be delivered with a workbench and toolholder.

Part number	Type
9020-03-00	MidiSkive 5-50C 400 V/0,37kW 3-phase

ACCESSORIES

Part number	Type
-------------	------

Skiving tool external short arm - EST

9022-00-00	Holder to skiving tool + 1 short arm.
9022-00-01	Short arm
9022-00-03	Cutting knife
9022-02-03	Mandrel 3/16"
9022-00-04	Mandrel 1/4"
9022-00-05	Mandrel 5/16"
9022-00-06	Mandrel 3/8"
9022-00-08	Mandrel 1/2"
9022-00-10	Mandrel 5/8"
9022-00-12	Mandrel 3/4"
9022-00-16	Mandrel 1"

Skiving tool external long arm - EST

9022-01-00	Holder to skiving tool + 1 long arm.
9022-00-02	Long arm
9022-00-03	Cutting knife
9022-01-20	Mandrel 1 1/4" long
9022-01-24	Mandrel 1 1/2" long
9022-01-32	Mandrel 2" long

Skiving tool internal - IST

9025-01-05	Cutting knife internal 5 mm-3/8"
9025-01-06	Cutting knife internal 6 mm-1/2"
9025-01-08	Cutting knife internal 8 mm-5/8" - 3/4"
9025-01-10	Cutting knife internal 10 mm-1" - 1 1/4"
9025-02-10	Cutting knife internal long 10 mm-1 1/2" - 2"
9025-15-06	Skiving tool internal 3/8"
9025-15-08	Skiving tool internal 1/2"
9025-15-10	Skiving tool internal 5/8"
9025-15-12	Skiving tool internal 3/4"
9025-15-16	Skiving tool internal 1"
9025-15-20	Skiving tool internal 1 1/4"
9025-15-24	Skiving tool internal 1 1/2"
9025-15-32	Skiving tool internal 2"

Skiving tool external/internal - OST See part no. 9025-16

9082 POWERSKIVE 5-50



Length: 1200 mm
 Width: 680 mm
 Height: 1080 mm
 Weight: 132 kg

A semi-automatic skiving machine for inner and outer skiving. With the Push-On-tool, the machine can also assembly hose and fitting. The machine is quick, reliable and easy to use. An unique centering system assures the hose's correct position during the entire skiving and inserting process.

Part number	Type
9082-03-00	PowerSkive 5-50 400V/0,75kW 3-phase 315 rpm
9082-03-01	PowerSkive 5-50 230V/0,75kW 1-phase 700 rpm

ACCESSORIES

Part number	Type
-------------	------

Skiving tool, external, short arm - EST

9022-00-00	Holder to skiving tool + 1 short arm.
9022-00-01	Short arm
9022-00-03	Cutting knife
9022-02-03	Mandrel 3/16"
9022-00-04	Mandrel 1/4"
9022-00-05	Mandrel 5/16"
9022-00-06	Mandrel 3/8"
9022-00-08	Mandrel 1/2"
9022-00-10	Mandrel 5/8"
9022-00-12	Mandrel 3/4"
9022-00-16	Mandrel 1"

Skiving tool external long arm - EST

9022-01-00	Holder to skiving tool + 1 long arm.
9022-00-02	Long arm
9022-00-03	Cutting steel
9022-01-20	Mandrel 1 1/4" long
9022-01-24	Mandrel 1 1/2" long
9022-01-32	Mandrel 2" long

Skiving tool internal - IST

9025-01-05	Cutting knife internal 5 mm-3/8"
9025-01-06	Cutting knife internal 6 mm-1/2"
9025-01-08	Cutting knife internal 8 mm-5/8" - 3/4"
9025-01-10	Cutting knife internal 10 mm-1" - 1 1/4"
9025-02-10	Cutting knife internal long 10 mm-1 1/2" - 2"
9025-15-06	Skiving tool internal 3/8"
9025-15-08	Skiving tool internal 1/2"
9025-15-10	Skiving tool internal 5/8"
9025-15-12	Skiving tool internal 3/4"
9025-15-16	Skiving tool internal 1"
9025-15-20	Skiving tool internal 1 1/4"
9025-15-24	Skiving tool internal 1 1/2"
9025-15-32	Skiving tool internal 2"

Skiving tool external/internal - OST See part no. 9025-16

9082-02 TWINSKIVE 5-50



Length: 1200 mm
 Width: 680 mm
 Height: 1080 mm
 Weight: 123 kg

A semi-automatic skiving machine for inner and outer skiving. With the Push-On-tool, the machine can also assemble hose and fitting. The machine is quick, reliable and easy to use. An unique centering system assures the hose's correct position during the entire skiving and inserting process.

Part number	Type
9082-02-00	TwinSkive 5-50 400V/2x0,75kW 3-phase, 315 rpm
9082-02-01	TwinSkive 5-50 230V/2x0,75kW 3-phase, 315 rpm

ACCESSORIES

Part number	Type
Skiving tool external short arm - EST	
9022-00-00	Holder to skiving tool + 1 short arm.
9022-00-01	Short arm
9022-00-03	Cutting knife
9022-02-03	Mandrel 3/16"
9022-00-04	Mandrel 1/4"
9022-00-05	Mandrel 5/16"
9022-00-06	Mandrel 3/8"
9022-00-08	Mandrel 1/2"
9022-00-10	Mandrel 5/8"
9022-00-12	Mandrel 3/4"
9022-00-16	Mandrel 1"

Skiving tool external long arm - EST

9022-01-00	Holder to skiving tool + 1 long arm.
9022-00-02	Long arm
9022-00-03	Cutting knife
9022-01-20	Mandrel 1 1/4" long
9022-01-24	Mandrel 1 1/2" long
9022-01-32	Mandrel 2" long

Skiving tool internal - IST

9025-01-05	Cutting knife internal 5 mm-3/8"
9025-01-06	Cutting knife internal 6 mm-1/2"
9025-01-08	Cutting knife internal 8 mm-5/8" - 3/4"
9025-01-10	Cutting knife internal 10 mm-1" - 1 1/4"
9025-02-10	Cutting knife internal long 10 mm-1 1/2" - 2"
9025-15-06	Skiving tool internal 3/8"
9025-15-08	Skiving tool internal 1/2"
9025-15-10	Skiving tool internal 5/8"
9025-15-12	Skiving tool internal 3/4"
9025-15-16	Skiving tool internal 1"
9025-15-20	Skiving tool internal 1 1/4"
9025-15-24	Skiving tool internal 1 1/2"
9025-15-32	Skiving tool internal 2"

Skiving tool external/internal - OST See part no. 9025-16

9022 SKIVING TOOLS - EST



Hydroscand's assortment consists of both inner and outer skiving tools. The external tool, that can be supplied with two cutters, are used for bradied and spiral hoses. The internal tool is mainly used for braided high pressure hoses. Hydroscand can also offer a skiving tool for OneSkive 5-50, which makes simultaneous inner and outer skiving possible.

Part number	Type
-------------	------

Skiving tool, external, short arm - EST

9022-00-00	Holder to skiving tool + 1 short arm.
9022-00-01	Short arm
9022-00-03	Cutting knife
9022-02-03	Mandrel 3/16"
9022-00-04	Mandrel 1/4"
9022-00-05	Mandrel 5/16"
9022-00-06	Mandrel 3/8"
9022-00-08	Mandrel 1/2"
9022-00-10	Mandrel 5/8"
9022-00-12	Mandrel 3/4"
9022-00-16	Mandrel 1"

Part number	Type
-------------	------

Skiving tool, external, long arm - EST

9022-01-00	Holder to skiving tool + 1 long arm.
9022-00-02	Long arm
9022-00-03	Cutting knife
9022-01-20	Mandrel 1 1/4" long
9022-01-24	Mandrel 1 1/2" long
9022-01-32	Mandrel 2" long

9025 SKIVING TOOLS - IST



Hydroscand's assortment consists of both inner and outer skiving tools. The external tool, that can be supplied with two cutters, are used for bradied and spiral hoses. The internal tool is mainly used for braided high pressure hoses. Hydroscand can also offer a skiving tool for OneSkive 5-50, which makes simultaneous inner and outer skiving possible

Part number	Type
-------------	------

9025-01-05	Cutting knife internal 5 mm-3/8"
9025-01-06	Cutting knife internal 6 mm-1/2"
9025-01-08	Cutting knife internal 8 mm-5/8" - 3/4"
9025-01-10	Cutting knife internal 10 mm-1" - 1 1/4"
9025-02-10	Cutting knife internal long 10 mm-1 1/2" - 2"
9025-15-06	Skiving tool internal 3/8"
9025-15-08	Skiving tool internal 1/2"
9025-15-10	Skiving tool internal 5/8"
9025-15-12	Skiving tool internal 3/4"
9025-15-16	Skiving tool internal 1"
9025-15-20	Skiving tool internal 1 1/4"
9025-15-24	Skiving tool, internal 1 1/2"
9025-15-32	Skiving tool internal 2"

9025-16 SKIVING TOOLS - OST



Hydroscand's assortment consists of both inner and outer skiving tools. The external tool, that can be supplied with two cutters, are used for braided and spiral hoses. The internal tool is mainly used for braided high pressure hoses. Hydroscand can also offer a skiving tool for OneSkive 5-50, which makes simultaneous inner and outer skiving possible

Part number	Type
-------------	------

Skiving tool external/internal - Short arm

9022-00-00	Holder to skiving tool + 1 short arm.
9022-00-01	Short arm
9025-01-08	Cutting knife internal 6 mm-1/2"
9025-01-08	Cutting knife internal 8 mm-5/8" - 3/4"
9025-01-10	Cutting knife internal 10 mm-1" - 1 1/4"
9025-16-08	Mandrel 1/2"
9025-16-10	Mandrel 5/8"
9025-16-12	Mandrel 3/4"
9025-16-16	Mandrel 1"
9025-16-20	Mandrel 1 1/4"
9022-00-03	Cutting knife

Skiving tool external/internal - Long arm

9022-01-00	Holder to skiving tool + 1 long arm.
9022-00-02	Long arm
9025-01-10	Cutting knife internal 10 mm 1"-1 1/4"
9025-02-10	Cutting knife internal 10 mm 1 1/2"-2"
9025-16-16	Mandrel 1"
9025-16-20	Mandrel 1 1/4"
9025-16-24	Mandrel 1 1/2"
9025-16-32	Mandrel 2"
9022-00-03	Cutting knife

9083-03 TWINPUSH 5-50



A semi-automatic machine for easy assembly of hose and fitting. The machine is quick, reliable and easy to handle. A unique centering system assures the hose's correct position during the entire skiving and inserting process. The machine is equipped with two tool holders that make it easier to change between the tool for straight and 45°/90° fittings.

Length: 1200 mm
 Width: 680 mm
 Height: 1080 mm
 Weight: 125 kg

Part number	Type
9083-03-00	TwinPush 5-50, insert machine 230 V 50 Hz 1-phase, excl. tools

9083 PUSH-ON TOOLS



The tool to use for insertion of both straight and 45°/90° fittings into the hose. The Push-On tool is used with AutoSkive 5-50, OneSkive 5-50 and AutoInsert 5-50.

Part number	Type
-------------	------

Push-On tool for straight fittings

9083-01-03	Push-On tool straight 3/16"
9083-01-04	Push-On tool straight 1/4"
9083-01-05	Push-On tool straight 5/16"
9083-01-06	Push-On tool straight 3/8"
9083-01-08	Push-On tool straight 1/2"
9083-01-10	Push-On tool straight 5/8"
9083-01-12	Push-On tool straight 3/4"
9083-01-16	Push-On tool straight 1"
9083-01-20	Push-On tool straight 1 1/4"
9083-01-24	Push-On tool straight 1 1/2"
9083-01-32	Push-On tool straight 2"

Part number	Type
-------------	------

Push-On tool for 45° and 90° fittings

9083-02-03	Push-On tool 45°/90° 3/16"
9083-02-04	Push-On tool 45°/90° 1/4"
9083-02-05	Push-On tool 45°/90° 5/16"
9083-02-06	Push-On tool 45°/90° 3/8"
9083-02-08	Push-On tool 45°/90° 1/2"
9083-02-10	Push-On tool 45°/90° 5/8"
9083-02-12	Push-On tool 45°/90° 3/4"
9083-02-16	Push-On tool 45°/90° 1"
9083-02-20	Push-On tool 45°/90° 1 1/4"
9083-02-24	Push-On tool 45°/90° 1 1/2"
9083-02-32	Push-On tool 45°/90° 2"

Part number	Type
-------------	------

Push-On tool for fittings with plastic washer

9083-03-03	Push-On tool 45°/90° 3/16" PW
9083-03-04	Push-On tool 45°/90° 1/4" PW
9083-03-05	Push-On tool 45°/90° 5/16" PW
9083-03-06	Push-On tool 45°/90° 3/8" PW
9083-03-08	Push-On tool 45°/90° 1/2" PW
9083-03-10	Push-On tool 45°/90° 5/8" PW
9083-03-12	Push-On tool 45°/90° 3/4" PW
9083-03-xx	Push-On tool 45°/90° Special tools as required



9004 HOSEREEL 1

**HoseReel 1**

Length: 1200 mm
Width: 1200 mm
Height: 830 mm
Weight: 40 kg

Part number	Type
9004-00-03	HoseReel 1, hose reel

9004 HOSEREEL 6 / HOSEREEL 7

Hose reel for six or seven hoses. HoseReel 6 and 7 saves a lot of time since it keeps the most common hoses available. HoseReel 6 or 7 can be used for hoses of dimensions from 3/16" - 1 1/4". All baskets (except the bottom one) can be swung outward horizontally in order to easily put the hose in place.

Part number	Type
9004-00-08	HoseReel 6, hose reel
9004-01-21	Wheel kit for HoseReel 6
9004-00-07	HoseReel 7, hose reel
9004-01-21	Wheel kit for HoseReel 7



HoseReel 6

Length: 1170 mm
 Width: 1000 mm
 Height: 2000 mm
 Weight: 140 kg
 ID: 250 mm
 OD: 900 mm



HoseReel 7

Length: 1270 mm
 Width: 1000 mm
 Height: 2230 mm
 Weight: 148 kg
 ID: 250 mm
 OD: 1010 mm

9004 AUTOREEL V / AUTOREEL H

Motorized hose reels with step-less speed control for easy hose reeling. Ideal for long hoses. Can be combined with HoseReel 1 for simplified handling.

AutoReel V is suitable for hoses of dimension 1/8" to 1 1/4".
 AutoReel H is suitable for hoses of dimension 1/8" to 2".



AutoReel V



AutoReel H

AutoReel V

Length: 1200 mm
 Width: 600 mm
 Height: 1400 mm
 Weight: 75 kg
 ID adjustable: 250-800 mm

AutoReel H

Length: 1200 mm
 Width: 1200 mm
 Height: 830 mm
 Weight: 65 kg
 ID adjustable: 150-500 mm

Part number	Type
9004-02-03	AutoReel V, hose reel 230V 50Hz 3-phase
9004-01-03	AutoReel H, hose reel 230V 50Hz 3-phase



9013/14/15 SWAGING MANDRELS



In order to control that the swaging has resulted in the correct internal collapse, use Hydroscaud's swaging mandrels. The GO-side should pass through the fitting to ensure that the swaging is not overdone, while the STOP-side should stop in the middle of the tail to insure that the swaging is sufficient.

Part number	Hose dim.	Type
9013-00-04	1/4"	Swaging mandrels IL/4400-series
9013-00-06	3/8"	Swaging mandrels IL/4400-series
9013-00-08	1/2"	Swaging mandrels IL/4400-series
9013-00-10	5/8"	Swaging mandrels IL/4400-series
9013-00-12	3/4"	Swaging mandrels IL/4400-series
9013-00-16	1"	Swaging mandrels IL/4400-series
9013-00-20	1 1/4"	Swaging mandrels IL/4400-series
9013-00-24	1 1/2"	Swaging mandrels IL/4400-series
9013-00-32	2"	Swaging mandrels IL/4400-series

Part number	Hose dim.	Type
9015-03-05	3/16"-5/16"	Swaging mandrels 4200-series
9015-00-04	1/4"	Swaging mandrels 4200-series
9015-00-06	3/8"	Swaging mandrels 4200-series
9015-00-08	1/2"	Swaging mandrels 4200-series
9015-00-10	5/8"	Swaging mandrels 4200-series
9015-00-12	3/4"	Swaging mandrels 4200-series
9015-00-16	1"	Swaging mandrels 4200-series
9015-00-20	1 1/4"	Swaging mandrels 4200-series
9015-00-24	1 1/2"	Swaging mandrels 4200-series
9015-00-32	2"	Swaging mandrels 4200-series

9031 MARKMAN II MARKING MACHINE



9031-10-02

9031-10-01

Manual or pneumatic machine for marking ferrules (before swaging). The marking machine can be used on all hose ferrules with dimensions from 3/16" up to 2". The type holder can be provided with 2 or 3 text rows, alternatively with a complete 8-digit marking wheel.

	9031-10-01	9031-10-02
Length:	500 mm	500 mm
Width:	200 mm	380 mm
Height:	500 mm	500 mm
Weight:	28 kg	35 kg

Part number	Type
9031-10-01	MarkMan II-M, manual marking machine excl. types/holders
9031-10-02	MarkMan II-P, pneumatic marking machine excl. types/QC-adapter

ACCESSORIES

Part number	Type
9031-10-03	Type holder 2 (2 rows, 4 mm)
9031-10-04	Type holder 3 (3 rows, 4 mm)
9031-11-03	Type holder 2 (2 rows, 3 mm)
9031-11-04	Type holder 3 (3 rows, 3 mm)
9031-10-07	Type holder special (2-3 rows, special) according to customer's request
9031-10-05	QC-adapter for type holder HSAM 4
9031-00-04	Case kit 4 mm with types, suitable for 9031-10-03/04
9031-12-04	Case kit 3 mm with types, suitable for 9031-11-03/04
9031-00-06	Marking wheel AM 4-8 wheels
9031-10-06	QC-adapter for marking wheel AM 4-8 wheels

9031 AUTOFEED 15-80

AutoFeed 15-80 is a PLC-controlled automatic marking system for ferrules, suitable for ferrules from 15 mm to 80 mm OD. Using this will radically reduce your marking time. This system can only be used in combination with our pneumatic version of MarkMan 5-50 M/P (see technical specification, MarkMan 5-50 M/P).

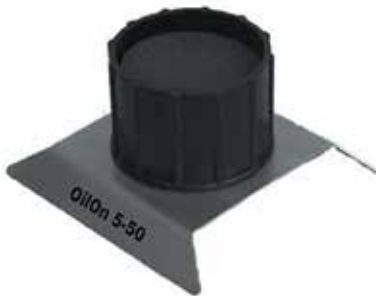
Length: 600 mm
Width: 1300 mm
Height: 900 mm
Weight: 50 kg

Part number	Type
9031-10-10	AutoFeed 15-80

9087 MAXICLEAN 5-32

A PLC controlled cleaning machine for pipes and hoses with dimensions from 3/16" to 1 1/4". The machine is extremely easy to use. The hose or the pipe is cleaned with a water-based fluid in a temperature between +55°C - +70°C in order to achieve a pureness level equivalent to ISO 16/12.

Part number	Type
9087-00-00	MaxiClean 5-32, PLC controlled cleaning machine for 1 hose/pipe at a time
9087-02-00	MaxiClean 5-32, PLC controlled cleaning machine for 2 hoses/pipes at a time

9081 OILON 5-50

A perfect tool for lubrication of hose fittings before assembly.

Length:	170 mm
Width:	170 mm
Height:	70 mm
Weight:	0,2 kg

Part number	Type
9081-01-14	OilOn 5-50 steel/plastic

9036 MICROJET 5-50

A quick and simple system using compressed air to clean your hose/tube, from 3/16" to 2".

Length:	120 mm
Width:	50 mm
Height:	100 mm
Weight:	0,3 kg
Connection:	R 1/2" F

Part number	Type
9036-01-00	MicroJet 5-50 complete
9036-00-01	Spare nozzle ø30mm
9036-00-02	Spare nozzle ø55mm

9023 TWINCUT



A tool for easy separation of twin hoses.

Part number	Type
9023-00-04	TwinCut for 1/4" hose
9023-00-05	TwinCut for 5/16" hose
9023-00-06	TwinCut for 3/8" hose
9023-00-08	TwinCut for 1/2" hose

9017 PINPRICKING



A compact pricking tool for pricking gas hoses.

Length: 170 mm
 Width: 160 mm
 Height: 410 mm
 Weight: 12 kg

Part number	Type
9017-00-00	PinPricking tool

9004 MEASURE MAN 5-50



MeasureMan 5-50 is a measuring machine for hoses from 3/16" to 2". The machine automatically adjusts to the hose size and centers during use. The measuring device is used in combination with our hose reels HoseReel 1, HoseReel 7, AutoReel H and AutoReel V.

Hose capacity: 1/8" - 2"

Width: 600 mm

Height: 360 mm

Weight: 8,5 kg

Stand dimension

Adjustable height: 570-950 mm

Weight: 17,0 kg

ACCESSORIES

Part number	Type
9004-00-04	MeasureMan

Part number	Type
9004-00-06	Stand for MeasureMan 5-50