



# P32NMS

DESIGNED FOR THE TOUGHEST ENVIRONMENTS

Finn-Power P32NMS is strong, fast and reliable crimping machine for any service crimping need. This model turns hydraulics off to conserve energy, and to reduce workplace noise levels whenever the machine is idle.

## TECHNICAL DATA

Max crimping dia (mm/inch) <sup>1)</sup>	87/3.42
Max crimping dia with master dies (mm/inch)	109/4.3
Max crimping force (kN)	2000
Max crimping force (tonnage)	200
Cycle time 10 mm (s) <sup>2) 3)</sup>	4.0/16.1
Hydraulic hose size (inch)	2 *
Industrial hose size (inch)	3.42 *
Die set series	32
Max opening (mm) <sup>4)</sup>	+33
Max opening without dies (mm)	132
Master die D/L (mm)	99/80
Master die D/L (inch)	3.90/3.15
Motor Power (kW/HP) <sup>3)</sup>	4.0/5.5 1.5/2.0
Oil tank volume	27 l

## DIMENSIONS (LxWxH)

(mm)	675x520x620
(inch)	26.6x20.4x24.4

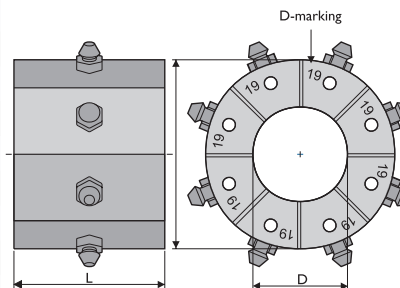
## WEIGHT (KG/LBS)

190/419

\* ACCORDING TO THE FITTING.



Foot pedal as an option.



- 1) With standard dies. Crimping range can be increased with special dies.
- 2) Theoretical with 10 mm cycle.
- 3) 3-phase/1-phase
- 4) Maximum opening is the total die travel. Add this value to the minimum crimping diameter of the die set used. The result is the maximum opening of the machine with die set in place.

Power supply cable not included.

Please note that the images are for illustrative purposes only. The final product may vary in design, features or specifications.

## CONTROL

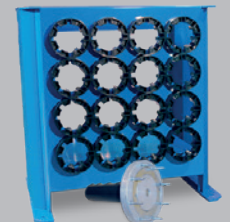
MS

## OPTIONS

Foot pedal (part no 676906)
Mechanical back stop device (part no 705510)
Tool base (20 slots) with QuickChange-tool (part no 710579)
Tool rack with QuickChange-tool (part no 692740)
QuickChange-tool (part no 701049)



Tool base with QuickChange-tool as an option.



Tool rack with QuickChange-tool as an option.

## DIE SET 32-SERIES

DieSetNo	D (mm)	L (mm)	Crimp. range (mm)
18506/10	10	55	10.0-12.0
18506/12	12	55	12.0-14.0
18506/14	14	55	14.0-16.0
18506/16	16	55	16.0-19.0
18506/19	19	55	19.0-22.0
18506/22	22	70	22.0-26.0
18506/26	26	70	26.0-30.0
18506/30	30	70	30.0-34.0
18506/34	34	75	34.0-39.0
18506/39	39	75	39.0-45.0
18506/45	45	90	45.0-51.0
18506/51	51	90	51.0-57.0
18506/57	57	100	57.0-63.0
18506/63	63	110	63.0-69.0
18506/69	69	110	69.0-75.0
18506/74	74	110	74.0-80.0
18506/78	78	110	78.0-87.0

In addition to the standard die sets, a wide range of special die sets is available on request.