



# CM35

CM35 is designed for workshop use. CM35 capacity is same as in CM30 but it comes with manual foot pedal. CM35 is easy to use and it comes with a fume exhaust connection.

3-phase and 1-phase electric configurations available.  
Please also see product cards for other CM30/35 configurations.

## TECHNICAL DATA

Max. hose size (inch) <sup>1)</sup>	2 / 1 1/4
Diameter (blade) external	300x3
Diameter (blade) internal	30
Max. hose OD	70
Exhaust outlet OD (mm)	60
Motor Power (kW) <sup>2)</sup>	3.0/2.2
Motor Power (HP) <sup>2)</sup>	4.0/2.9
Velocity, 50Hz	2750
Velocity, 60Hz	3370

## DIMENSIONS (LxWxH)

mm	712x562x1127
inch	28.0x22.1x44.4

## WEIGHT

kg/lbs	74/162.8
--------	----------

- 1) Hydraulic hose, 1-2 wire / 4 wire  
2) 3-phase / 1-phase

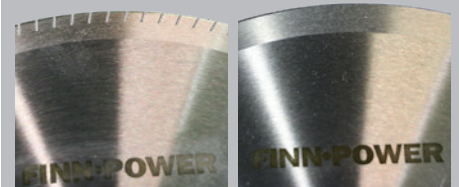
## STANDARD FEATURES

Toothed blade

## OPTIONS

Smooth blade

Motor brake (CM35B)



Toothed blade  
as a standard feature.

Smooth blade  
as an option.

**FURTHER INFO ON OPTIONS,  
PLEASE REVERT TO SPECIFIC PRODUCT CARD**

**POWERCO.LILLBACKA.COM LILLBACKAUSA.COM**

**J&E Machines B.V.** Jacobus Lipsweg 100  
3316 BP Dordrecht - The Netherlands  
T: +31 (0)78 - 61 79 839  
I: [www.jemachines.nl](http://www.jemachines.nl) - E: [info@jemachines.nl](mailto:info@jemachines.nl)