



# CM35

Please note that the images are for illustrative purposes only. The final product may vary in design, features or specifications.

CM35 is designed for workshop use. CM35 capacity is same as in CM30 but it comes with manual foot pedal. CM35 is easy to use and it comes with a fume exhaust connection.

3-phase and 1-phase electric configurations available. Please also see product cards for other CM30/35 configurations.

ABSOLUTE  
QUALITY  
MADE IN  
FINLAND

## TECHNICAL DATA

|                                     |           |
|-------------------------------------|-----------|
| Max. hose size (inch) <sup>1)</sup> | 2 / 1 1/4 |
| Diameter (blade) external (mm)      | 300x3     |
| Diameter (blade) internal (mm)      | 30        |
| Max. hose OD (mm)                   | 70        |
| Exhaust outlet OD (mm)              | 60        |
| Motor Power (kW) <sup>2)</sup>      | 3.0/2.2   |
| Motor Power (HP) <sup>2)</sup>      | 4.0/2.9   |
| Velocity, 50Hz (rpm)                | 2750      |
| Velocity, 60Hz (rpm)                | 3370      |

## DIMENSIONS (LxWxH)

|      |                |
|------|----------------|
| mm   | 712x562x1127   |
| inch | 28.0x22.1x44.4 |

## WEIGHT

|        |          |
|--------|----------|
| kg/lbs | 74/162.8 |
|--------|----------|

Power supply cable not included.

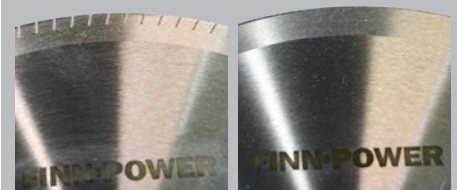
- 1) Hydraulic hose, 1-2 wire / 4 wire
- 2) 3-phase / 1-phase

## STANDARD FEATURES

- Toothed blade (part no 12297)
- Foot pedal

## OPTIONS

- Smooth blade (part no 12319)



Toothed blade as a standard feature.

Smooth blade as an option.